



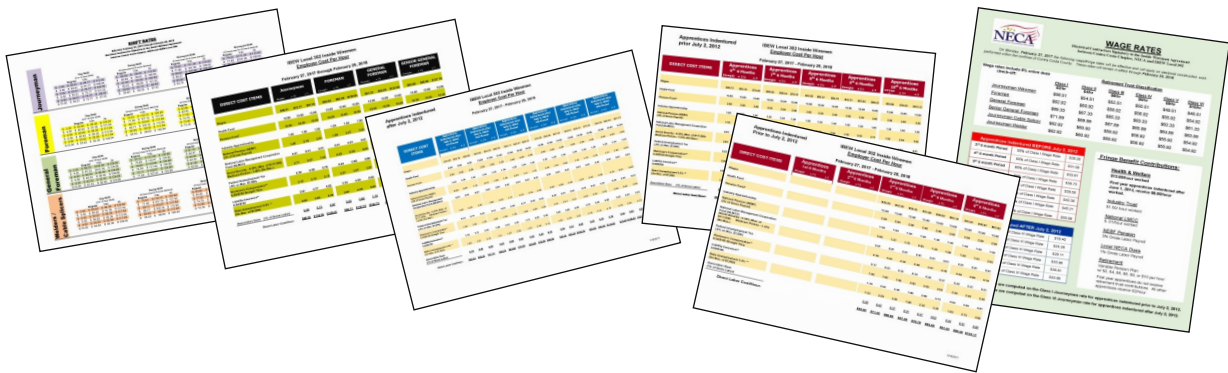
# SUMMER

OUR 55TH YEAR

CONTRA COSTA CHAPTER

February 2018

## Inside Wireman Agreement Wage/Benefit Increase



### **Effective February 26, 2018**

The members of IBEW Local Union 302 voted to allocate all of their \$1.25 per hour increase on February 26, 2018, to wages. Our Agreement with Local 302 will expire on May 31, 2018.

New Wage Sheets and Cost-Per-Hour Sheets reflecting the \$1.25 hour increase can be found at: <http://www.ccneca.org/Wages.html>



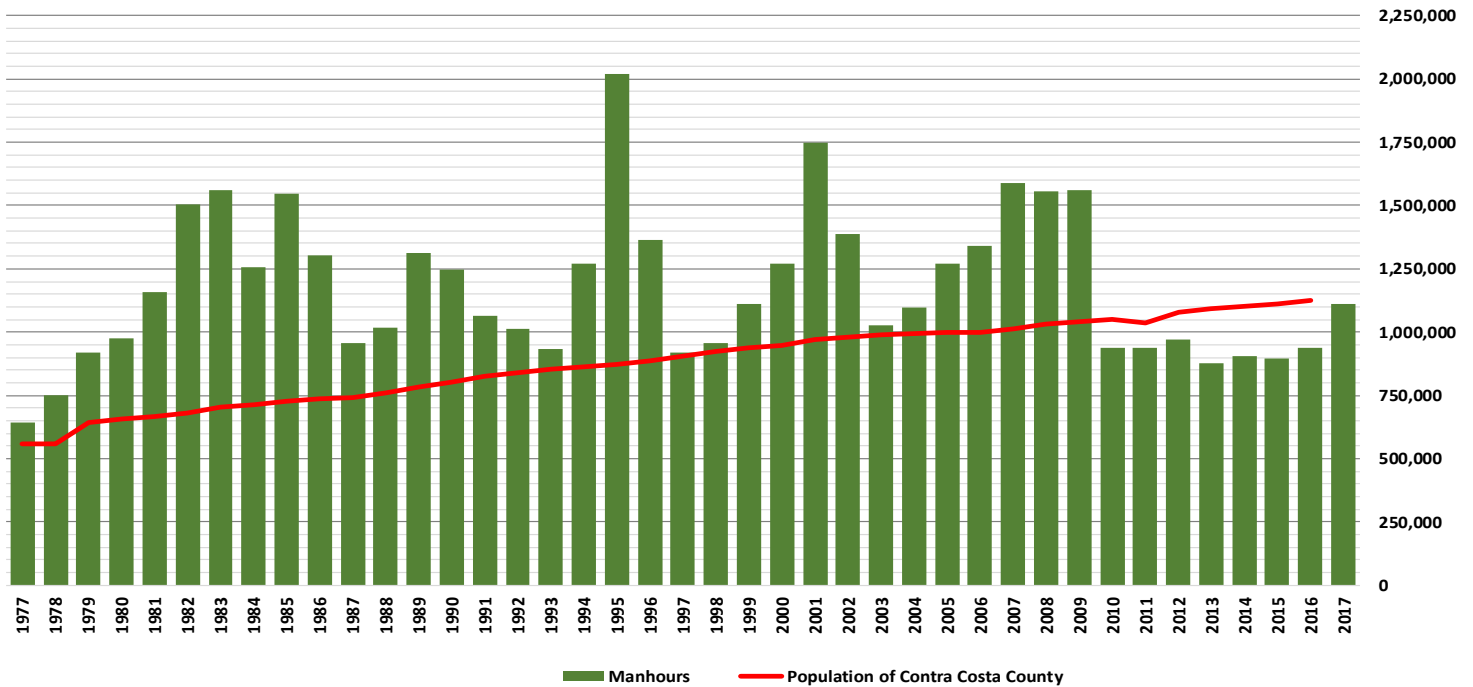
## **New NECA Manual of Labor Units Available**

In early January, you should have received a letter in the mail from our National Office offering a complimentary copy of the 2017-2018 Manual of Labor units. If you have not already done so, you will want to take advantage of the offer as the member price of the Manual of Labor Units is now \$90. You can also use the form to order additional copies. If you have misplaced your complimentary copy order form and want to take advantage of the offer, please contact Sharon at the Chapter office.

# IBEW LOCAL UNION 302

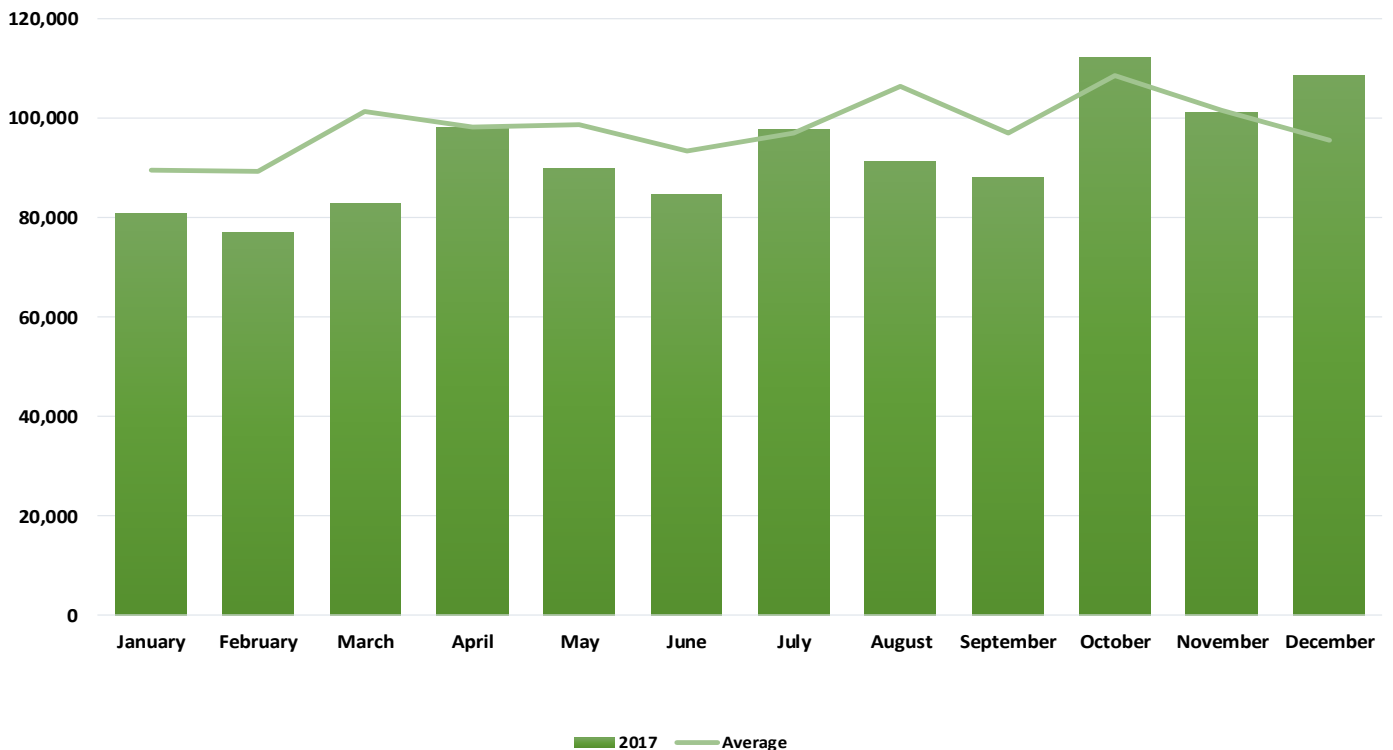
## Inside Wireman/Maintenance

### Manhours Worked



## 2017 Compared with Historic Average

### Inside Wireman/Maintenance



# Join the Be The Match Registry in honor of patients like Braxton.

**Commit** to being a donor for **ANY PATIENT** when:  
A patient is actively searching for a donor to be their cure  
**AND**  
Your DNA matches that patient



Braxton is a 5 year old energetic middle son with a huge heart. He loves to be outdoors whether it's bouncing on the trampoline in the backyard with his brothers, climbing at the park, or just running wild and carefree. Braxton's two obsessions are babies and video games. He was recently diagnosed with a very rare blood disorder, HLH XLP2, and will be needing a bone marrow transplant to finally be healthy.

Help Braxton and all searching patients find their match.

Joining is simple and takes less than 10 minutes – fill out a form and swab your cheek. Once you join, you stay on the registry until you are 61 and are called to donate only if you are the best match for a patient. For the patients we serve, transplant is their best or only chance for survival and most people don't realize they have the power to be that patient's cure.

**IBEW LOCAL 302**  
**MARROW DONOR REGISTRY DRIVE**  
**AGES 18-44**

**DATE:** Saturday, February 3<sup>rd</sup>

**TIME:** 10:00am – 3:00pm

**LOCATION:** IBEW Local 302  
1875 Arnold Drive, Martinez

## **CONTACT INFORMATION:**

**Be The Match Representative**  
**Jennifer Eisenbud Sawle**  
(510) 507-9861  
[jsawle@nmdp.org](mailto:jsawle@nmdp.org)

To join the registry, you must:

- Be between the ages of 18-44
- Be in general good health
- Be committed to donating to anyone in need

\* ages 45-60 can register online with \$100 donation

**Can't make the event?**

**Join Be The Match online at:**

[join.bethematch.org/Match4Brax](http://join.bethematch.org/Match4Brax)

**BE**  **THE MATCH®**

[BeTheMatch.org](http://BeTheMatch.org)

NP20227 MAR 2015





ElectricTV.net is a 100% video-based website and since its inception in 2007 has introduced more than 170 features on the high-quality installation and maintenance work of the International Brotherhood of Electrical Workers and The National Electrical Contractors Association.



This is a special "super" edition of Electric TV. Thanks to the NECA/IBEW Powering America Team, U.S. Bank Stadium is ready for the Superbowl on Sunday.

**Watch the Full Story Now**



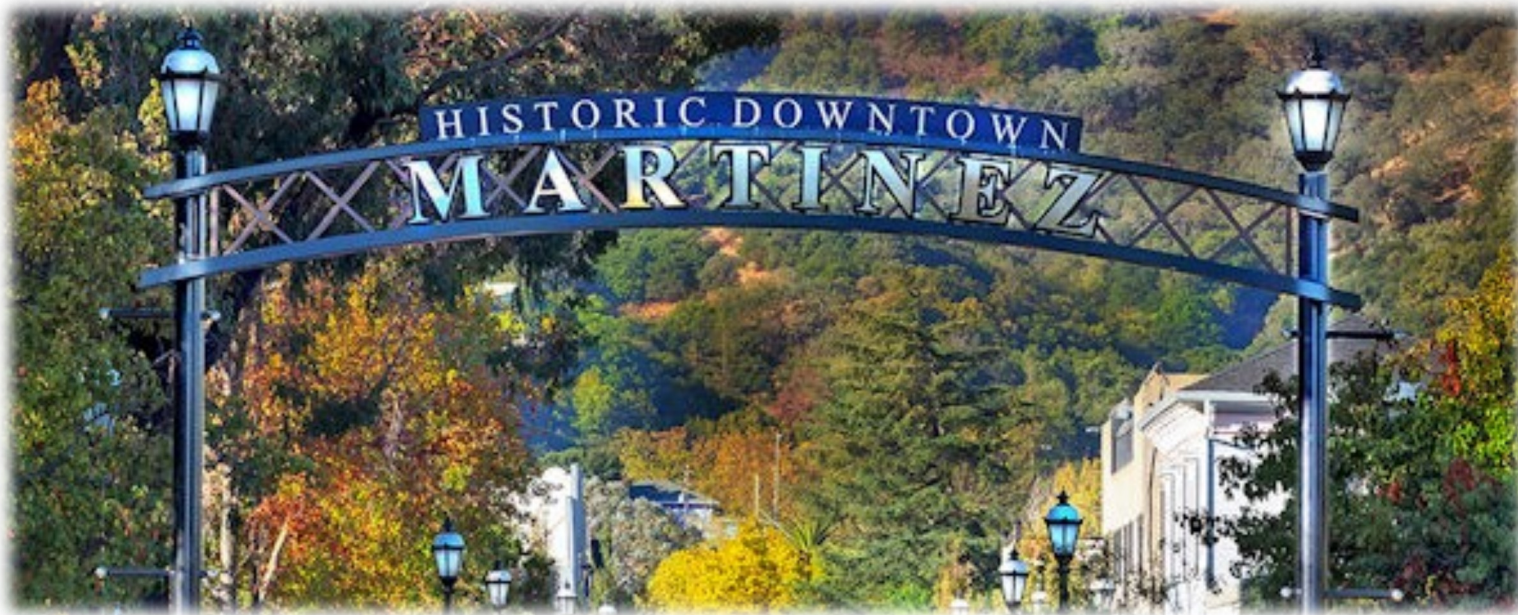
**SYNERGY**  
eLinks

**[NEW INSIDE WIREMEN WAGE RATES EFFECTIVE  
FEBRUARY 26, 2018](#)**


**[NEW INSIDE WIREMEN COST PER HOUR  
SHEETS EFFECTIVE FEBRUARY 26, 2018](#)**

**[NEW INSIDE WIREMEN SHIFT RATES EFFECTIVE  
FEBRUARY 26, 2018](#)**

**[DISCLOSURE ABOUT AN EMPLOYER'S  
PARTICIPATION IN A MULTIEMPLOYER PLAN](#)**



# February 2018

<i>Sun</i>	<i>Mon</i>	<i>Tue</i>	<i>Wed</i>	<i>Thur</i>	<i>Fri</i>	<i>Sat</i>
				1	2	3
4	5	6	7	8	9	10
11	12	13	14	15 <b>JATT</b> Martinez Training Center 3:00 p.m.	16	17
18	19 <b>Holiday</b> 	20 <b>S &amp; C Apprentice Interviews</b> Martinez Training Center 10:00 a.m.	21	22	23	24
25	26	27	28 <b>Health &amp; Welfare</b> Martinez Training Center 11:00 a.m.	<b>NECA/Electrical Industry Long Range Planning Meeting</b> Monterey Plaza, Monterey		



**CONTRA COSTA CHAPTER**  
1024 Court Street, Martinez, CA 94553  
(925) 372-3222  
[www.ccneca.org](http://www.ccneca.org)