



SUMMER

OUR 53RD YEAR

CONTRA COSTA CHAPTER

September 2016

Annual Meeting of the Contra Costa County Electrical Industry Trust

September 29th



The Annual Meeting of the Contra Costa County Electrical Industry Trust will be held at Ruth's Chris Steak House, in Walnut Creek, Thursday, September 29, 2016 @ 6:00 p.m. Our September NECA Chapter Membership Meeting will be held in conjunction with the Annual Meeting, and is open to all signatory contractors.

Each year the Board of Trustees report on the progress of the Electrical Industry Trust and the other Trust funds that are included in the hourly contribution rate, which include the Joint Apprenticeship and Training Committee, our local LMCC, and our Statewide LMCC.

The Electrical Industry Trust will also be holding an election during this meeting to fill one Trustee position. Candidates must be a representative of a Contra Costa-based firm that makes contributions on a regular basis to the various Trust funds under the Inside Wireman's Agreement. If interested, please contact the NECA office to get the proper nomination form and procedures.

Please make an effort to attend this meeting so you can catch up on anything you may have missed over the summer.



September 5, 2016

Labor Day, a holiday recognized under all of our Agreements with IBEW, will be observed on Monday, September 5, 2016. Our Inside Wireman Agreement and the Sound and Communication Agreement specifically prohibit any work from being performed on Labor Day, except in the case of an emergency.

You should also be aware that Friday, September 2, is a "Carpenters Off-Day" under the Inside Wireman and the Sound and Communication Agreement.

[History of Labor Day](#)

UPDATED!

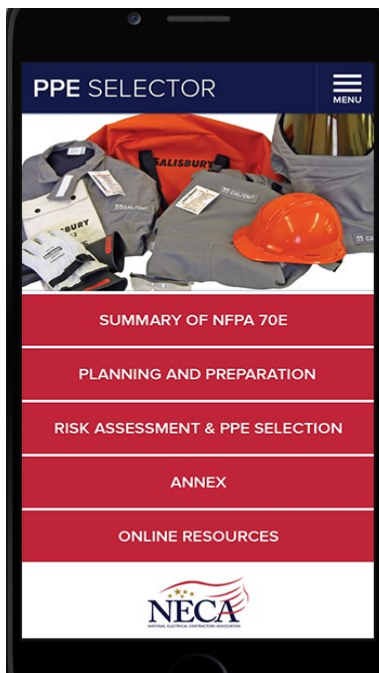
NFPA 70E PERSONAL PROTECTIVE EQUIPMENT (PPE) SELECTOR GUIDE

The NFPA 70E Personal Protective Equipment (PPE) Selector Guide, (5024-15), was developed to assist the industry in understanding and applying the provisions found in "NFPA 70E, The Standard for Electrical Safety in the Workplace". It has been revised to the current 2015 edition of this NFPA standard and provides a simplified approach and understanding to the Personal Protective Equipment requirements to help in keeping workers safe. Maintenance Related Safety Requirements are now included in the standard and is a basis for applying the provisions found in the Table Method for implementing Personal Protective Equipment and Arc Flash Protection. Item No. 5024-15 at the [NECA Store](#). Member Price: \$25



ALSO UPDATED FROM NECA:

[NECA-IBEW Sample Energized Electrical Work Policy](#)

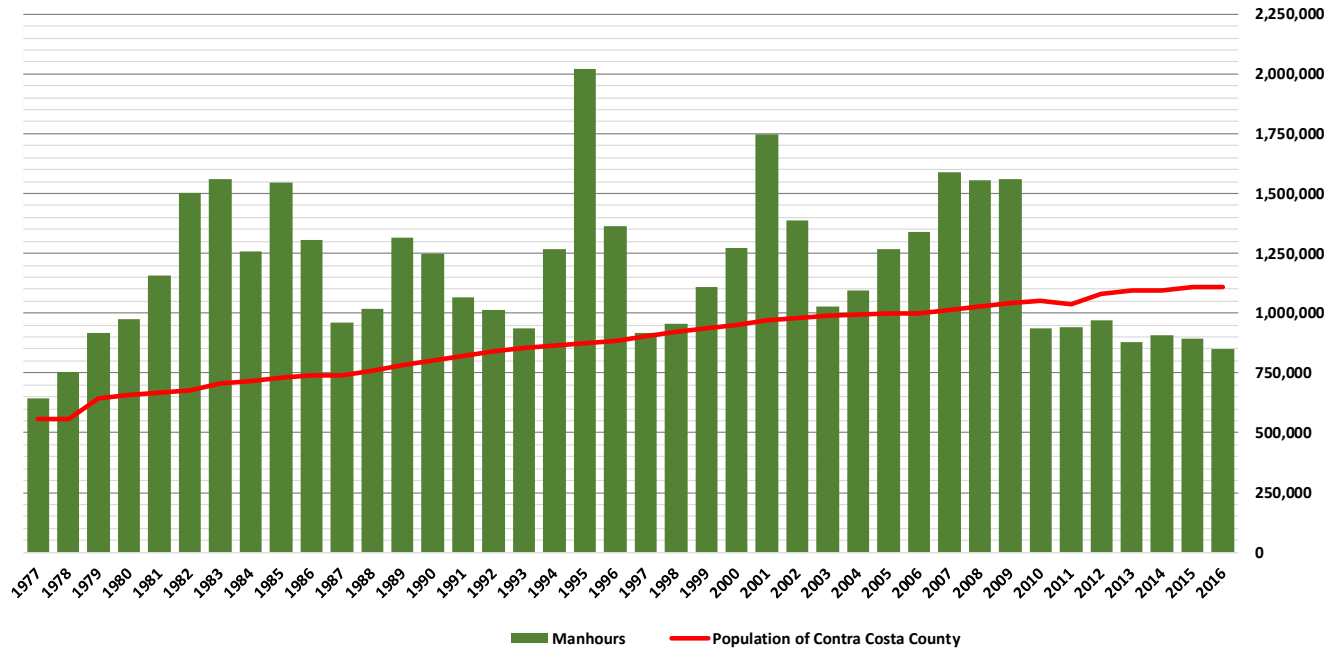


**DETERMINE THE
PROPER SAFETY EQUIPMENT FOR
YOUR JOB
WITH THE PPE SELECTOR APP FROM NECA**

Effectively apply the personal protective equipment (PPE) requirements of NFPA 70E, "Standard for Electrical Safety in the Workplace," with NECA'S NFPA 70E PPE Selector App.



IBEW LOCAL UNION 302
Inside Wireman/Maintenance
Manhours Worked
 (2016 total projected on data available to date)

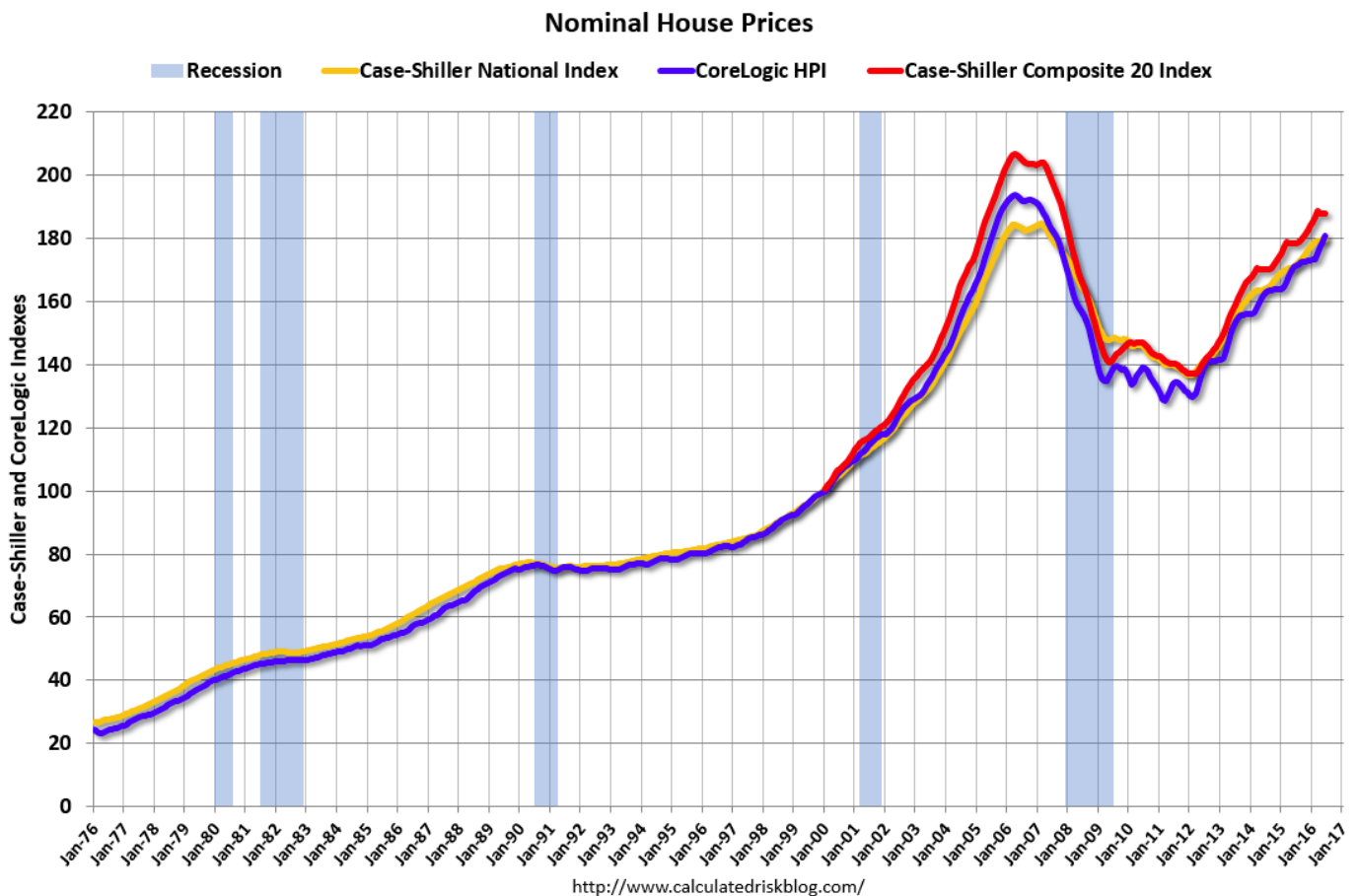


2016 Compared with Historic Average
Inside Wireman/Maintenance



CALCULATED RISK

Every picture tells a story, don't it?



“Calculated Risk” a Finance and Economic blog by Bill McBride.

If you want to subscribe yourself, see the link below.

Click [Here](http://www.calculatedriskblog.com/).

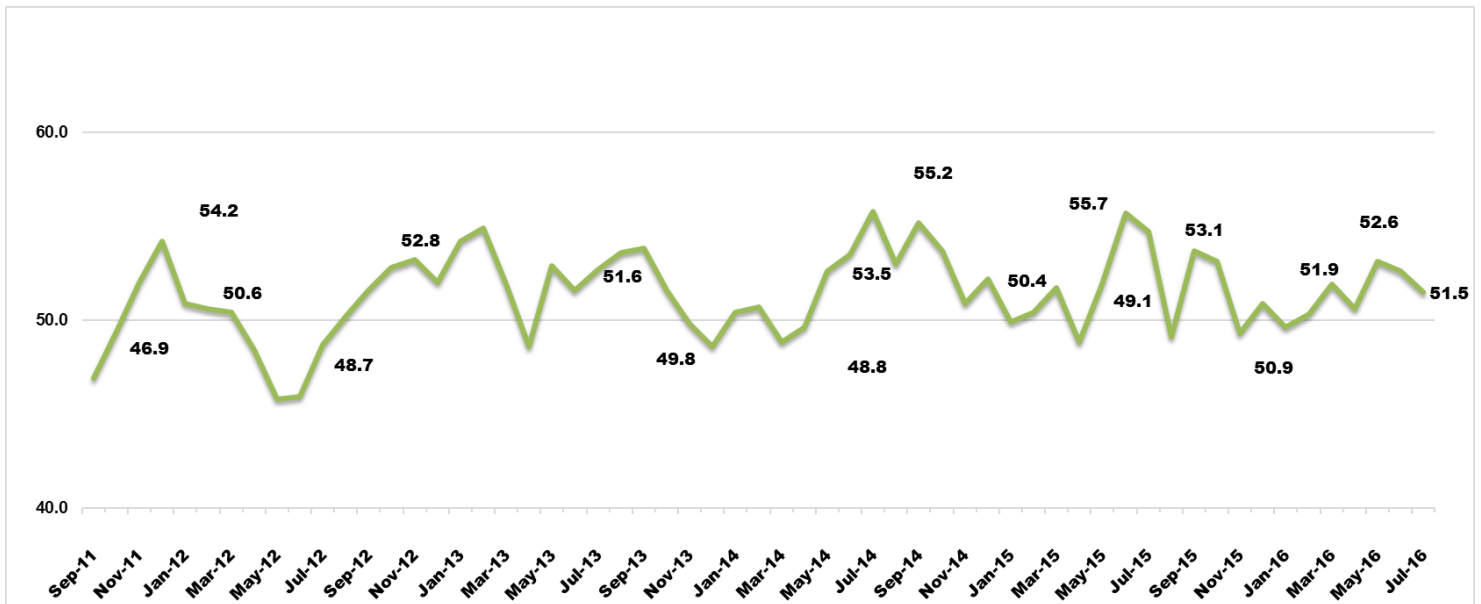
Architecture Billings

Index “Design Activity Remains at Healthy Levels”

... [read more.](#)

July ABI 51.5

Any score above 50 indicates an increase and score below indicates a decline.



SYNERGY eLinks		
NECA CONVENTION WEBSITE	KIPLINGERS' 2017 FORECAST	NECA-IBEW SAMPLE ENERGIZED ELECTRICAL WORK POLICY
2014 NEC CODE CHANGES	ELECTRICAL CONTRACTORS IN THE BAY AREA RANKED BY FISCAL YEAR 2015	



Sun

Mon

Tue

Wed

Thur

Fri

Sat

1

2
Off-Day

3

4

5
Labor Day

6

7

8

9

10

11

12

13

14

15
Health &
Welfare
Training Center
Martinez
11:00 a.m.

16

17

18

19

20

21

22

23

4

25

26

27

28

29
Annual Industry
Trust
NECA Chapter
& Board of
Directors
Ruth's Chris

30



CONTRA COSTA CHAPTER
1024 Court Street, Martinez, CA 94553
(925) 372-3222
www.ccneca.org